

HYPERPANEL EDGE AI 4 RELAYS

HYP032L4-0416000DI-104
HRelay4 - 4 power 16A relays

CORE

- Digital multi 16A power relays.
- Core STM32L431CCT6 32-bit ARM Cortex M4 MCU, 256-Kbyte FLASH, 64-Kbyte RAM.
- CRC calculation unit, 96-bit unique ID.
- On-board hardware encryption AES 256-bit.
- I2C inter-module data exchange.
- Ultra-low-power platform with two 3.3V & 5V voltage regulators.

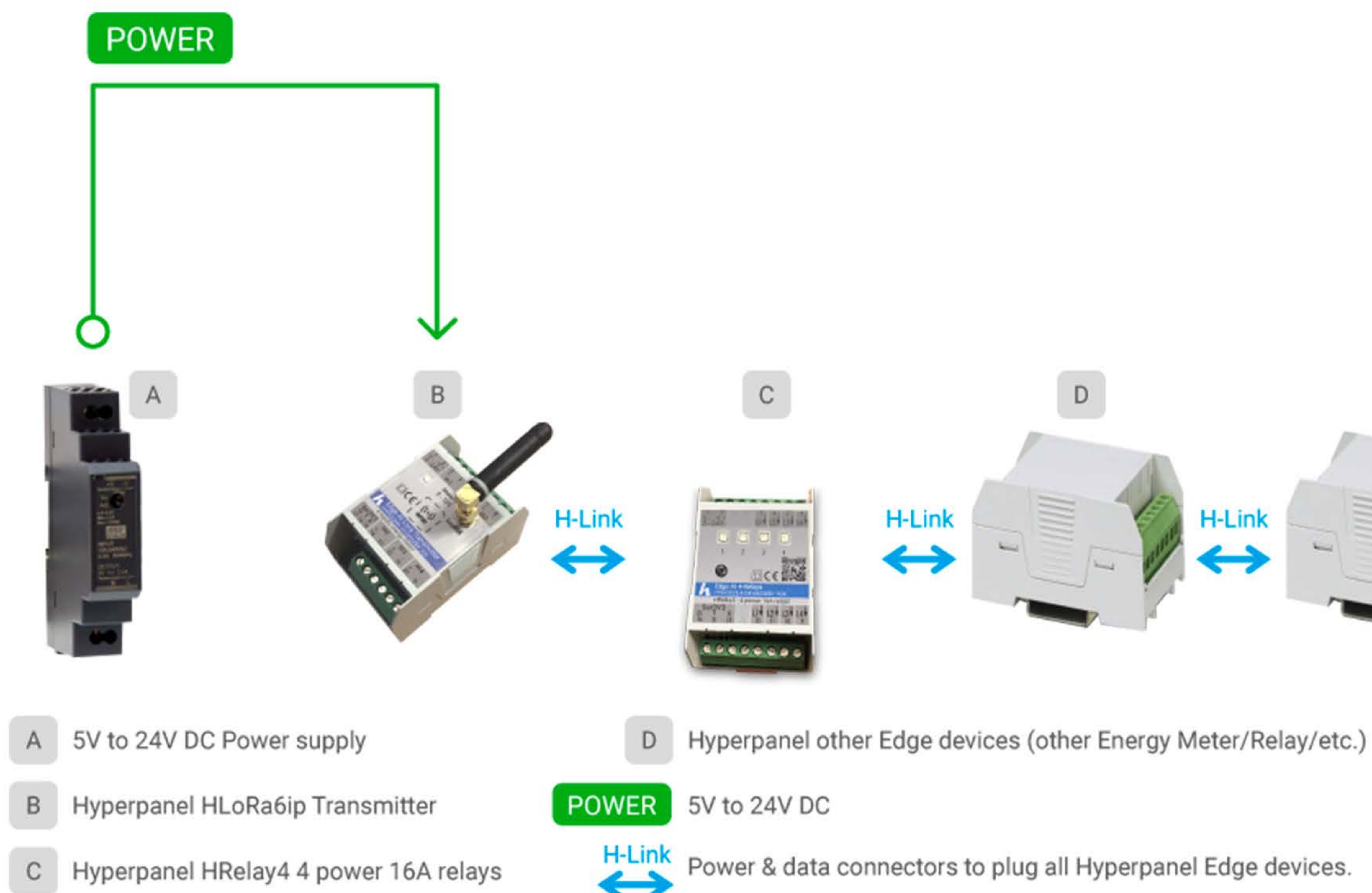
FEATURES

- 4 independent universal 16A power SPST relays (Single Pole Single Throw) compliant to IEC 60664-1 reinforced insulations, to control 4 equipment units.
- External ASY connector with TX / RX.
- 4 two-tone LEDs on the front panel for relay status monitoring.
- Powered by the HyperPanel Edge AI module connected to its left or with external power supply from 5V to 24V DC.
- Automatic recognition of other Edge AI modules.
- Left and right power & data connectors to chain the module with other Hyperpanel Edge AI modules without any external wiring.
- Ready-to-use DIN enclosure (2.5 units) for all DIN TH 35 / IEC 60715 rail-mounted industrial and domestic equipments.
- Compliant with NF C 15-100 for residential electrical installations.
- RoHS compliant.

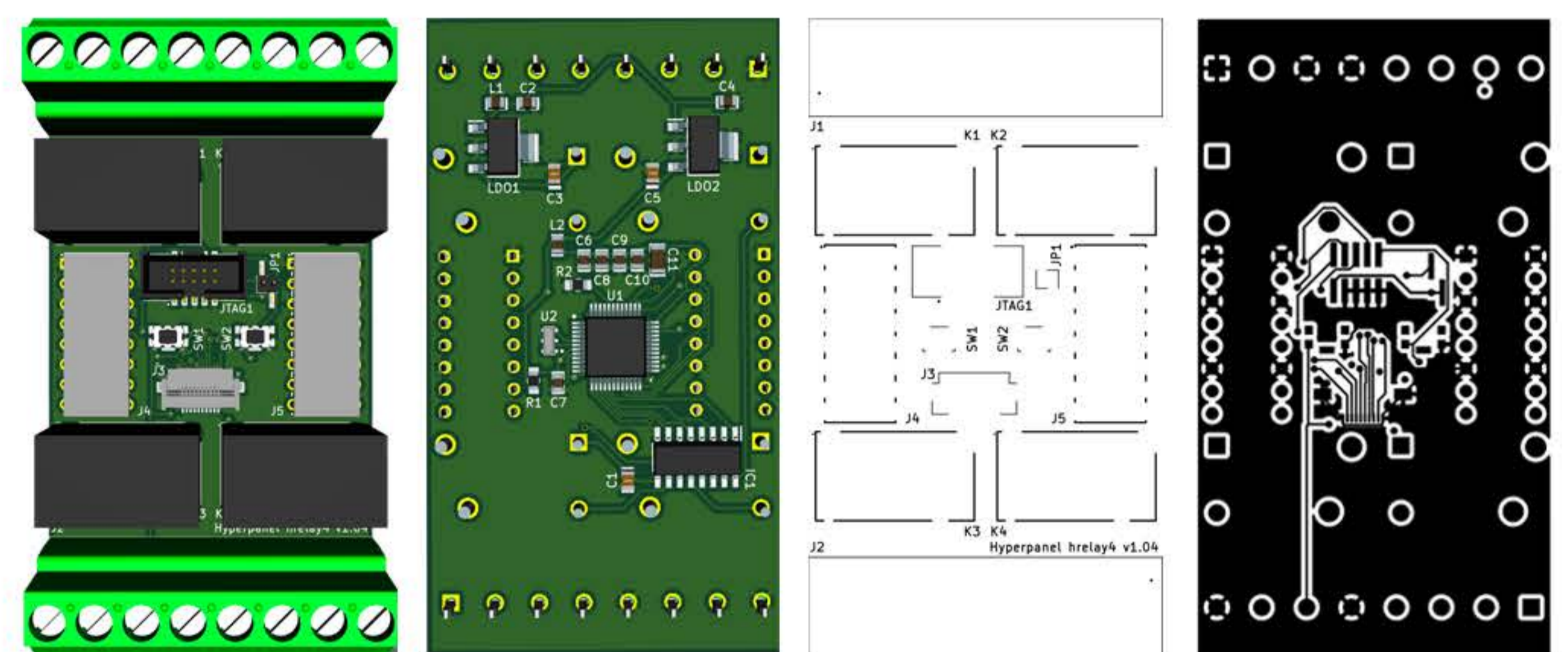
SOFTWARE

- Hyperpanel OS operating system - Sovereign operating system, natively secure and dedicated to Edge AI Computing applications.

USER DIAGRAM



PCB



- Two 4 layers PCBs: Main PCB with MCU / LDOs / relays, and shield with LEDs.
- BOM and Gerber files available.