

# HYPERPANEL EDGE AI LORA TRANSMITTER

HYP032WL-0120500DI-208

HLoRa6ip - 6 inputs energy meter

## CORE

- Digital multi energy meter wireless LoRaWAN transmitter.
- Core STM32WLE5CCU6 32-bit ARM Cortex M4 MCU, 256-Kbyte FLASH, 64-Kbyte RAM, LoRa radio modulation.
- Compliant with LoraWAN radio protocol.
- Dynamic NFC/RFID tag IC with 16-Kbit EEPROM, fast transfer and optimized I2C.
- On-board hardware encryption AES 256-bit.
- I2C inter-module data exchange.
- Ultra-low-power platform with two 3.3V & 5V voltage regulators.

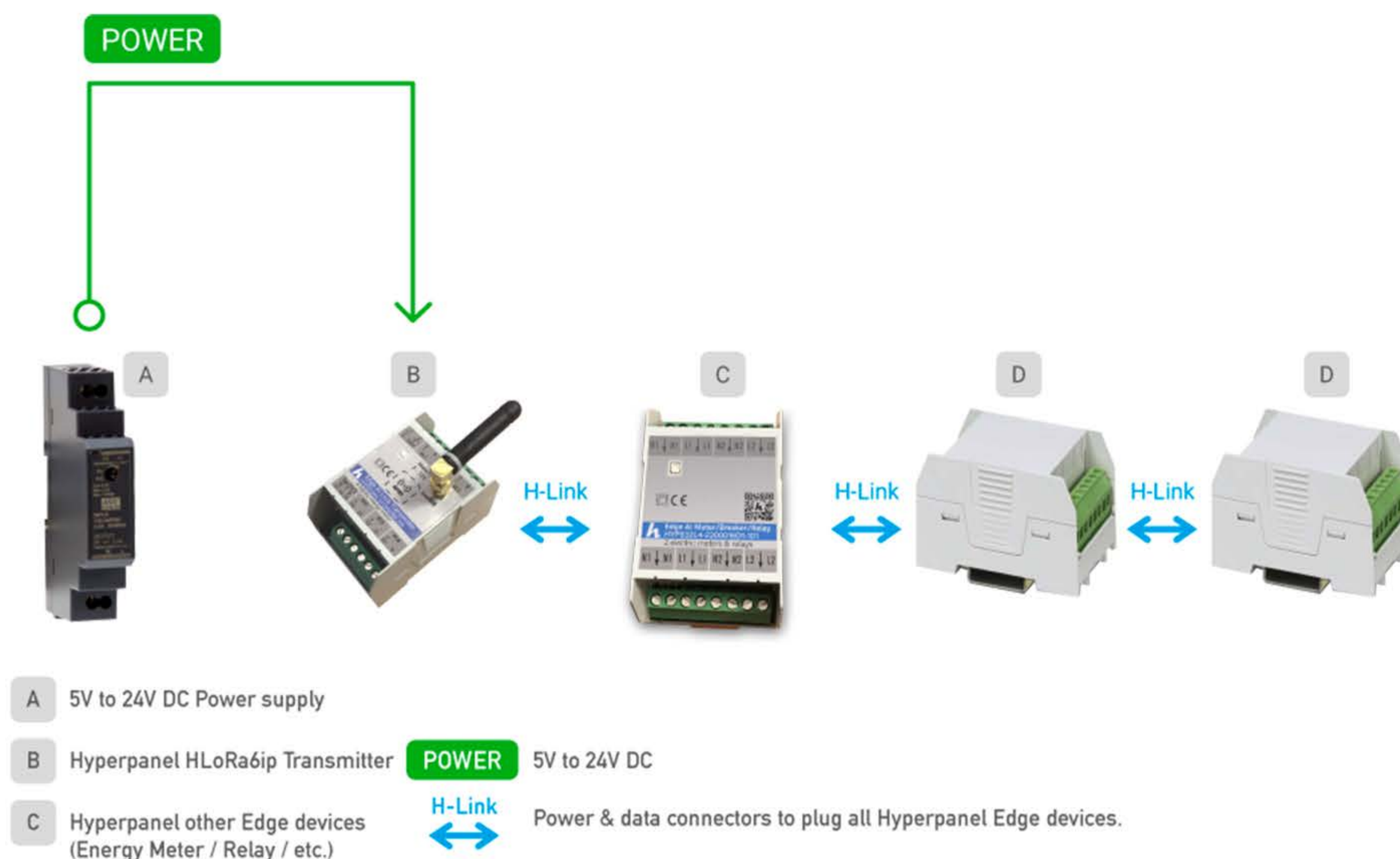
## FEATURES

- 868 MHz LoRaWAN radio antenna.
- 6 impulse power consumption inputs compliant with NF EN 62053-31 standard.
- Radio transmission of consumption data to any supervision system compliant with LoRa radio protocol.
- All inputs protected by optocoupler.
- RS-485 half-duplex communication with selectable terminating resistor.
- Internal ASY connector with TX / RX.
- On board RFID for easy pairing on any centralized management and home automation system.
- One two-tone LED on the front panel for module activities monitoring.
- External power supply from 5V to 24V DC.
- Automatic recognition of other Edge AI modules.
- Left and right power & data connectors to chain the module with other Hyperpanel Edge AI modules without any external wiring.
- Ready-to-use DIN enclosure (2.5 units) for all DIN TH 35 / IEC 60715 rail-mounted industrial and domestic equipments.
- Compliant with NF C 15-100 for residential electrical installations.
- RoHS Compliant.

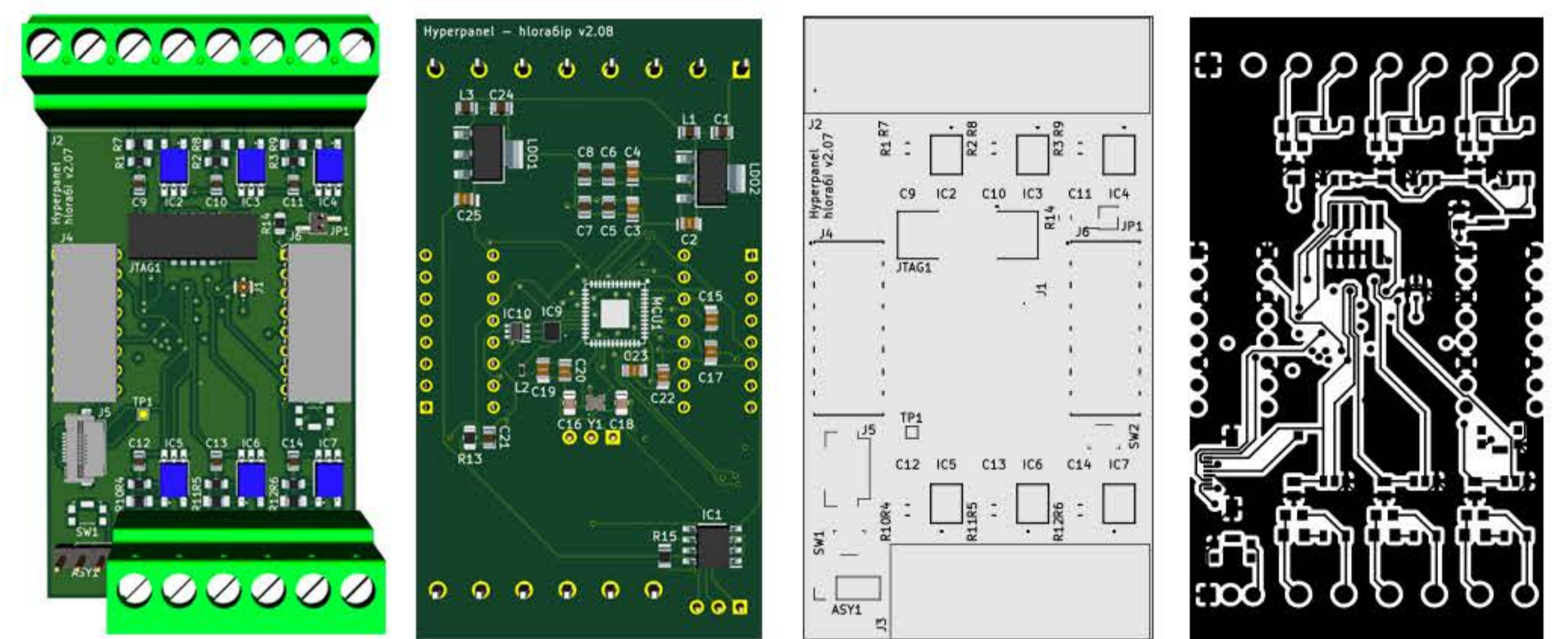
## SOFTWARE

- Hyperpanel OS operating system - Sovereign operating system, natively secure and dedicated to Edge AI Computing applications.

## USER DIAGRAM



## PCB



- Two 4 layers PCBs : A main PCB with MCU / power / inputs / connectors, and a shield with RFID / LoRaWAN antenna / LEDs.

- BOM and Gerber files available.